

ifi



ZEN CAN
Signature
HFM

Tech Lowdown

Special By Design

- ActivEQ is an exact match for HIFIMAN headphones
- End-to-end True Differential balanced circuitry
- Premium parts selection drawn from the £3,000 Pro range



Features

- Adjustable gain to match other headphones
- XSpace analogue headphone spatialiser
- 4.4mm balanced output



ActiveEQ

HIFIMAN's planer headphones

- Offer remarkable transparency
- Present wide-open sound staging

ZEN CAN Signature HFM

- Improves texture of the deep bass
- Injects more immediacy into the upper midrange

ActiveEQ

- EQ curve precisely correct
- Active and passive components
- Performed in the analogue domain
- Magical midrange is preserved
- SNR and distortion are unaffected

ActiveEQ can be switched off to use with other headphones.



HIFIMAN

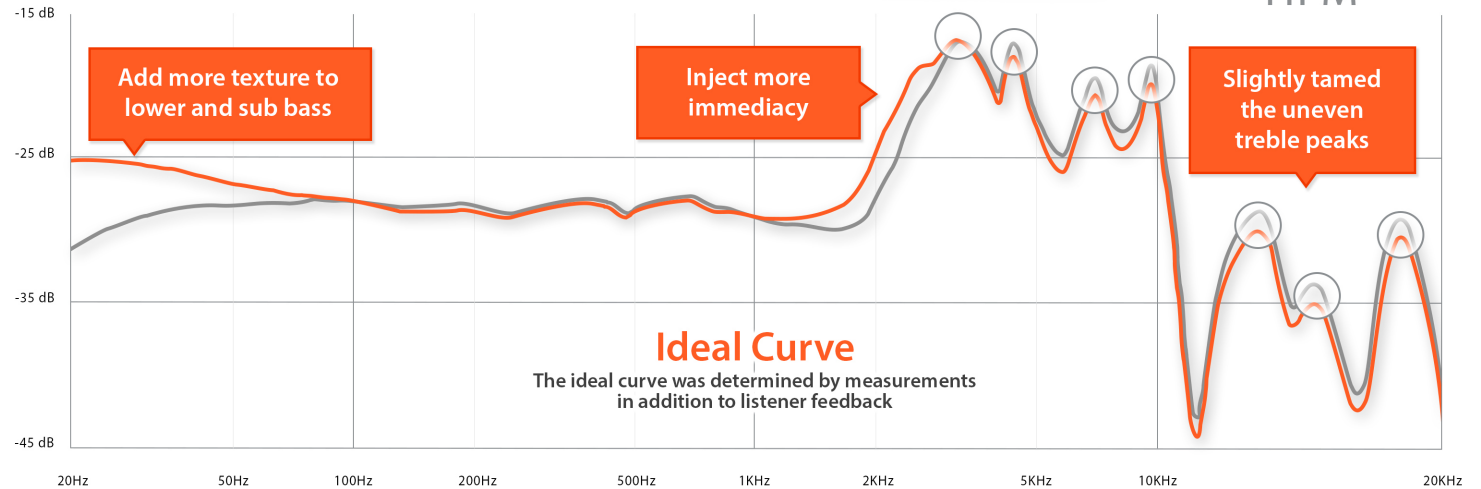
Headphone Match

HIFIMAN Headphones

Frequency Response
20Hz to 20KHz



ZEN CAN
Signature
HFM



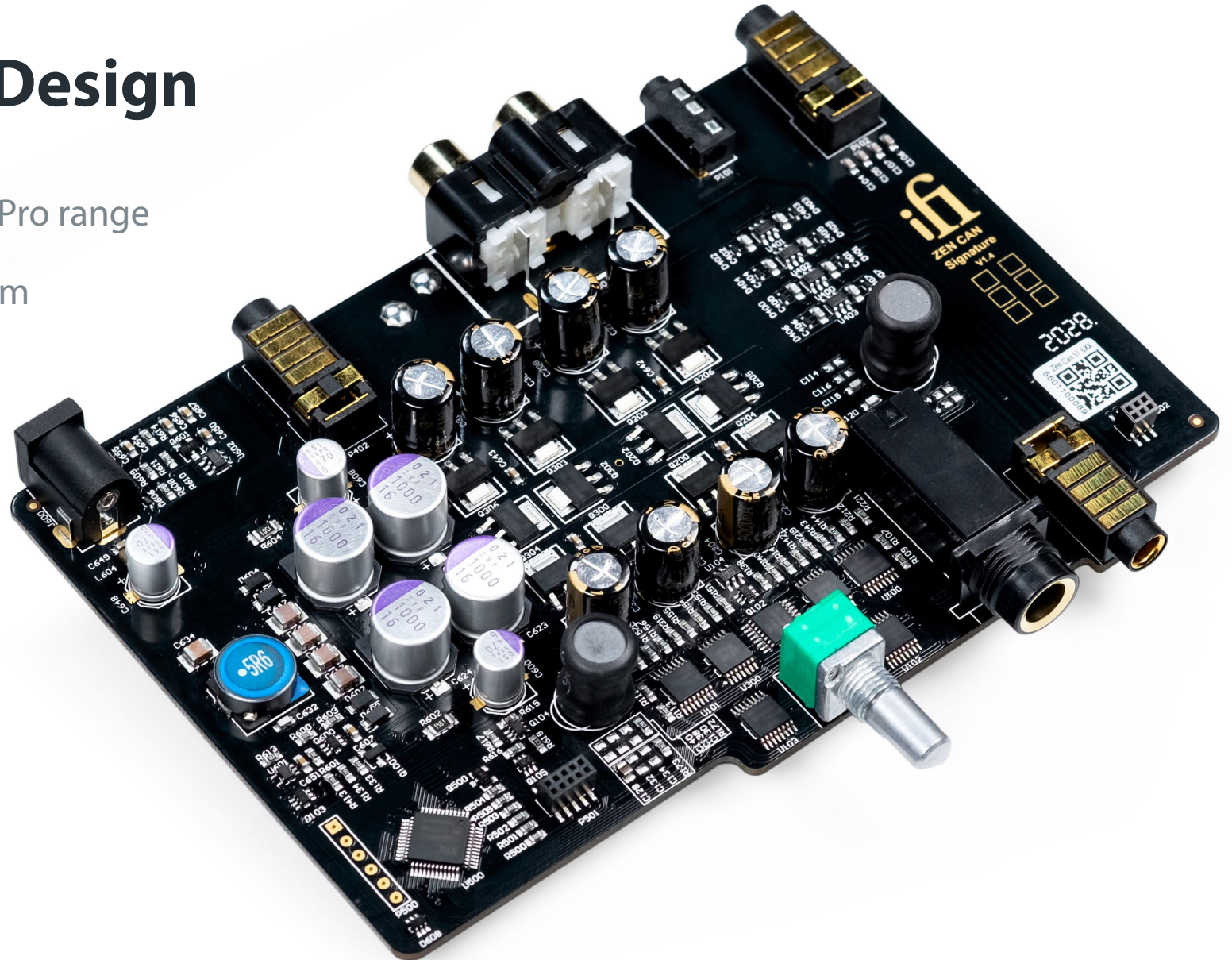
HIFIMAN Headphones Compatibility List

Excellent	Very Good	Good	Fair
Sundara	Ananda	HE300	HE300 V2
HE-4XX	HE-400i	Deva	
HE-400S	HE-500	HE-5 SE	
Edition X	HE-560	HE-6se	
HE-5	HE-1000 V1	HE-1000SE	
HE-5 LE	Edition X V2	HE-35X	
HE-400i 2020	HE-6		
HE-400se	Arya		
	HE-5XX		

- ZEN CAN Signature HFM+ HIFIMAN Headphones
- HIFIMAN Headphones

Pro Series High-End Circuit Design

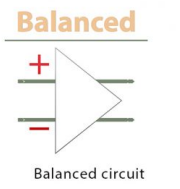
- Class A output stage from the Pro range
- Drives 15V / 385mW @ 600 Ohm
- <0.006% distortion



Superior Design and Components

Panasonic OS-CON
Excellent noise reduction capability and frequency characteristics

ELNA®
Elna Silmic II capacitors



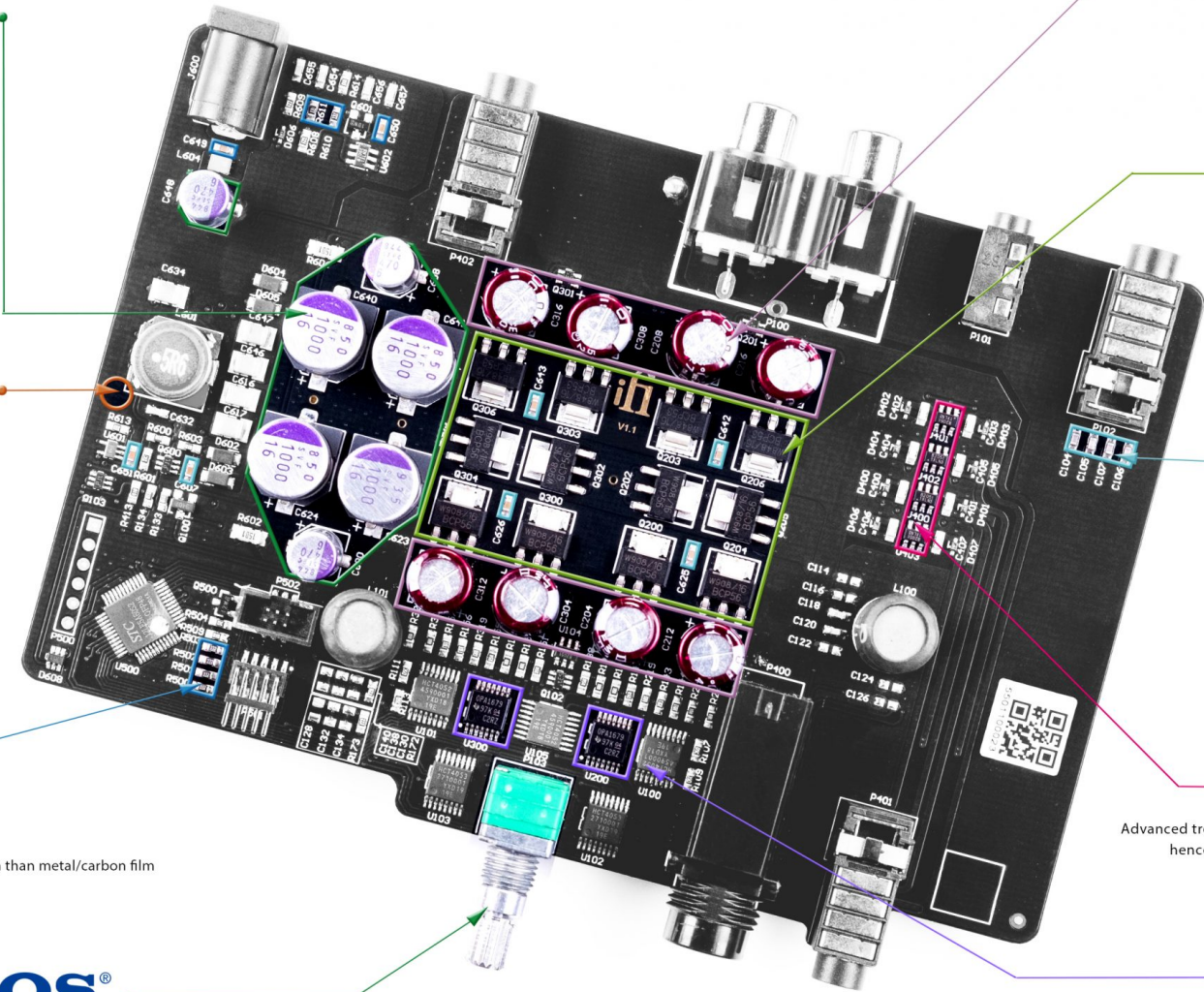
TDK
COG capacitors
For audio use with extremely low distortion

Thin Film Resistors
Power noise & distortion than metal/carbon film

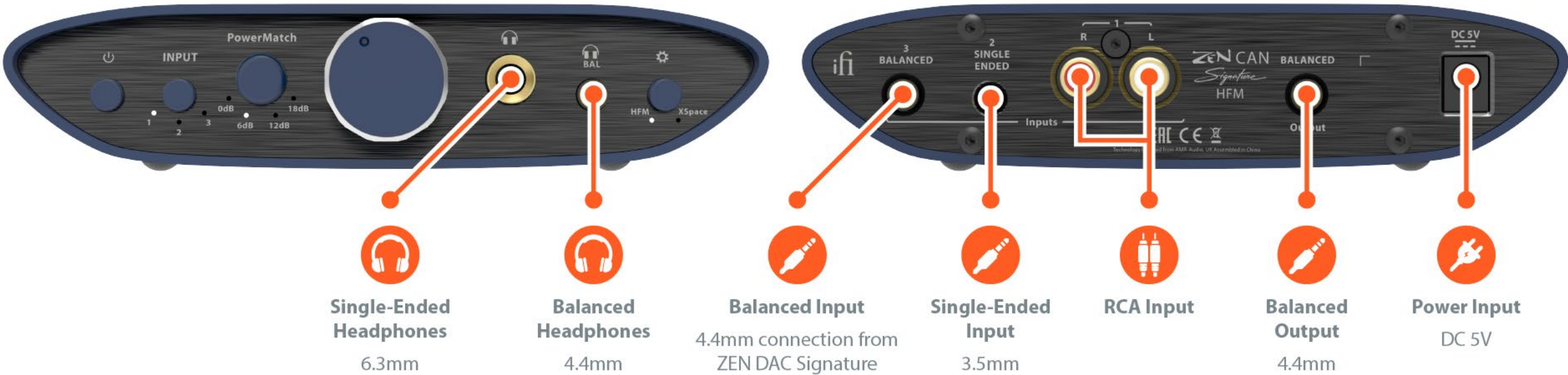
MOSFET
Advanced trench technology MOSFET as muting switch hence when not in use doesn't affect the sound.

TOCOS®
Tokyo Cosmos Electric Co., Ltd.
Tokyo Cosmos Electric potentiometer

ifi
Low noise/distortion OV2637A (0.0001%)
Performance equals/surpasses many high-end headphone amplifiers



Connections



Specifications

Input Voltage	DC 5V / 2.5A	
Max Output	Balanced	>15.1V/385 mW (@ 600 Ohm)
		>11.0V/1890 mW (@ 64 Ohm)
		>6.2V/1200 mW (@ 32 Ohm)
	Single-Ended	>7.6V/98mW (@ 600 Ohm)
		>7.4V/870 mW (@ 64 Ohm)
		>7.2V/1600 mW (@ 32 Ohm)
THD & N:	Balanced	<0.006% (@ 360 mW/2.4V 16 Ohm)
	Single-Ended	<0.005% (@ 100 mW/1.27V 16 Ohm)
SNR	Balanced	>121dBA (@ 15.2V)
	Single-Ended	>120dBA (@ 7.6V)

Max. Input	Balanced	7.4V RMS
	RCA	3.8V RMS
	3.5mm	1.92V RMS
Gain	0dB, 6dB, 12dB and 18dB	
Frequency Response	10Hz - 200kHz (-3dB)	
Power Consumption	No Signal	~0.5W
	Max Signal	~12W
Dimensions	158 x 117 x 35 mm	
	6.2" x 4.6" x 1.4"	
Net weight	550g (1.21 lbs)	

ifi
audio